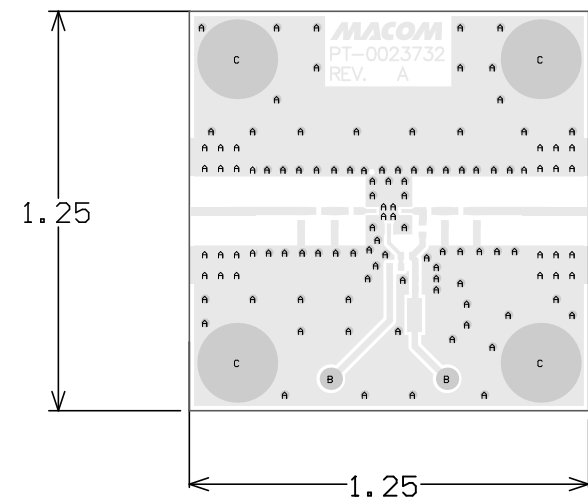


Symbol	Hit Count	FHS	Tolerance	Plated	Hole Type
A	113	18.00mil	+3/-18mil	PTH	Round
B	2	40.00mil	+/-3mil	PTH	Round
C	4	128.00mil	+/-3mil	PTH	Round
	119 Total				

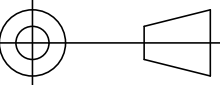


Board Outline

NOTES:

- MATERIAL:
R05880, COPPER ON TOP AND BOTTOM IS TO BE PLATED UP TO 1 OZ COPPER
- FINISH:
2A. PLATE WITH ENIG, 2-8 MICRO-INCH THICK PER IPC-6012, TYPE 3, OVER 118-236 MICRO-INCHES ELECTROLESS NICKEL PLATE ASTM B 733-97. THERE SHALL NO PITS, PIN HOLES OR NODULES WITHIN EXPOSED METAL AREAS.
2B. CIRCUIT SHALL MEET THE SOLDERABILITY REQUIREMENTS OF MIL-STD-202, METHOD 208.
- PCB SHALL CONFORM TO IPC-A-600 CLASS 2.
- ALL HOLES TO BE PLATED THRU UNLESS OTHERWISE SPECIFIED.
- LINE WIDTHS AND SPACINGS SHALL BE +/-1 MILS.
- ELECTRONIC DATA IS EQUAL TO THE FINISHED LINE WIDTH.
- ALL HOLE SIZES APPLY AFTER PLATING.
- COPPER PLATING IN THROUGH HOLES WILL BE .001 MINIMUM AVERAGE WITH AN ABSOLUTE MINIMUM OF .0007.
- DIMENSIONS SHOWN ARE FOR LOCATION OF 0,0 FOR THE DRILL FILE.
- NO SOLDERMASK OR SILKSCREEN ON PCB.
- ALL MATERIALS DESCRIBED IN THIS DOCUMENT/DRAWING SHALL BE IN COMPLIANCE WITH AND CONTAIN NO SUBSTANCES RESTRICTED OR REQUIRING SPECIAL RECLAMATION UNDER THE LATEST RoHS, WEEE OR ELV DIRECTIVES.

X	MAAM-011229
NEXT ASSY	USED ON
APPLICATION	

UNLESS OTHERWISE SPECIFIED INTERPRET DRAWING PER ASME Y14.5 DO NOT SCALE THIS DRAWING		UNLESS OTHERWISE SPECIFIED DIMENSIONS ARE IN INCHES		<div>MACOM</div> <div>WWW.MACOM.COM</div>					
<div>NOTE: THIS DRW INCORPORATES THIRD ANGLE PROJECTION</div> <div></div>		TOLERANCES ON					TITLE <div>FABRICATION, SMB</div> <div>MAAM-011229-CQ3</div>		
		DECIMALS	ANGLES						
<div>MACOM Technology Solutions</div> <div>CONFIDENTIAL INFORMATION SUBJECT TO NDA</div> <div><small>The information contained in this document or material is the valuable and confidential property of MACOM Technology Solutions Holdings, Inc. and/or its subsidiaries or affiliates collectively, MACOM, provided to you subject to a non-disclosure agreement between you and MACOM solely for use in supporting MACOM's business as and to the extent MACOM authorizes in writing from time to time. This information shall be held in strictest confidence and shall not be reproduced, published, disclosed to others, or used for any purpose except as and to the extent specifically authorized by MACOM in a separate written agreement. If permission is granted for reproduction, this legend must be included in any and all copies. This document or material shall be promptly returned to MACOM or destroyed upon request, completion of the use for which it was made available to recipient, or termination of MACOM's relationship with recipient, whichever first occurs.</small></div>		<div>.X ± .1</div> <div>.XX ± .02</div> <div>.XXX ± .005</div> <div>.XXXX ± .0005</div>	<div>± 0.5</div>	<div>TITLE</div> <div>FABRICATION, SMB</div> <div>MAAM-011229-CQ3</div>					
		UNLESS OTHERWISE SPECIFIED 63/ ALL OVER							
		MATERIAL	X				SIZE	DRAWING NO.	REVISION
		B	PT-0023732	A					
FINISH	X	SCALE:	X/X	PACKAGE TYPE:	X	SHEET 1 OF 1			